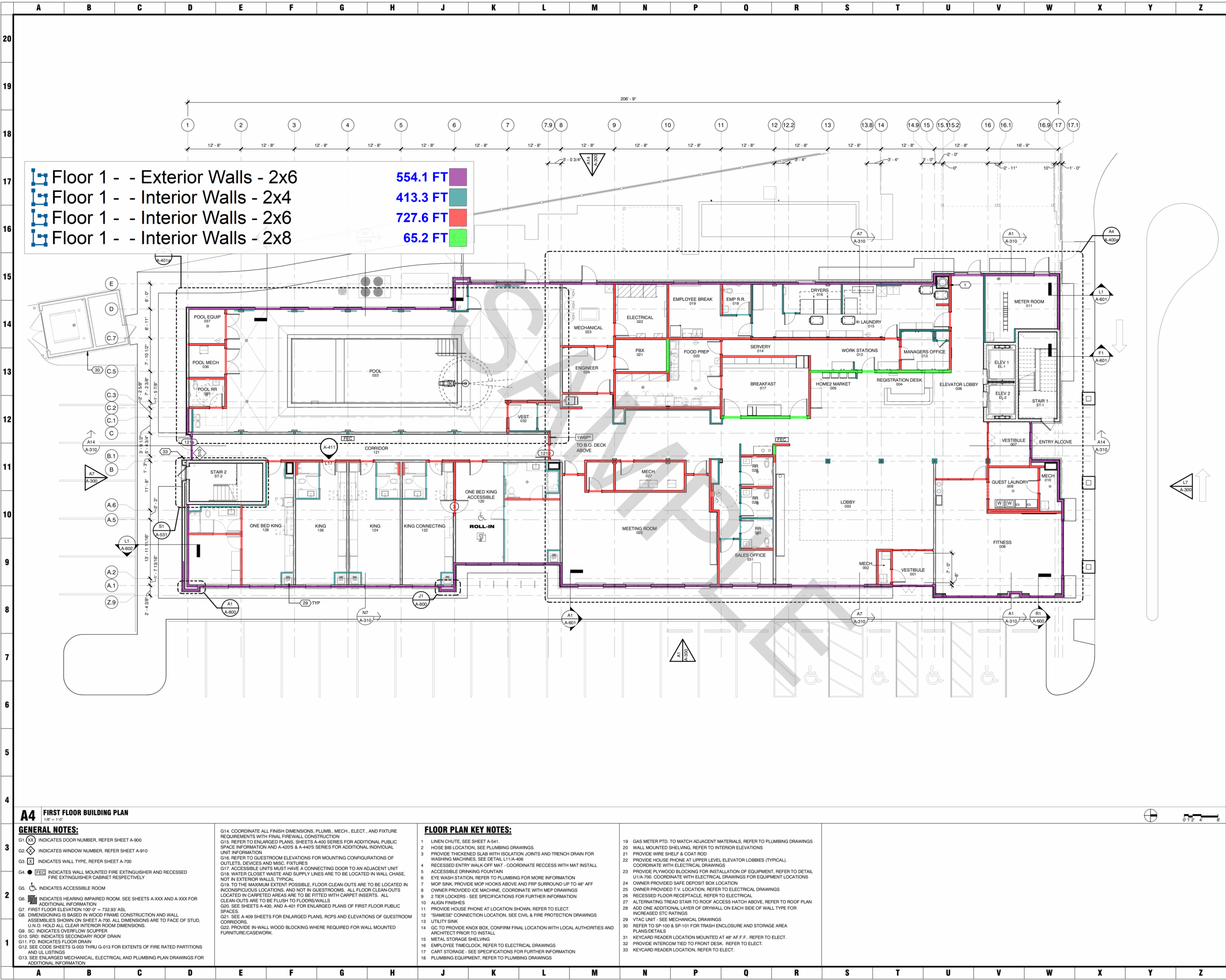


## Home2 Suites Columbus

Location	Material Description	Quantity	Unit	Notes
A	B	D	E	F
<b>1st Floor Walls</b>				
Exterior Walls	2x6x12	47	EA	
	2x12x12	8	EA	
	Silicone Caulk	781	LF	
	Flashing Tape	970	LF	
	Sill Flashing	189	LF	
	Building Wrap	8,115	SF	
	Building Wrap Tape	2,029	LF	
Shear Wall Panels	2x6x12	33	EA	
Interior Wall Panels	2x4x12	35	EA	
	2x6x12	61	EA	
	2x8x12	6	EA	
Punch Studs	2x4x14	40	EA	
	2x6x14	158	EA	
	2x8x14	7	EA	
	2x12x14	9	EA	
Bracing	2x4x14	273	EA	
Blocking	2x4x14	7	EA	
	2x6x14	9	EA	
	2x8x14	12	EA	
	2x10x14	5	EA	
Headers	2X6, 6' L	51	EA	
	2X10, 6' L	24	EA	
	2X12, 10' L	4	EA	
	2X12, 14' L	3	EA	
<b>2nd Floor Walls</b>				
Exterior Walls	2x6x12	50	EA	
	2x12x12	8	EA	

Location	Material Description	Quantity	Unit	Notes
A	B	D	E	F
	1-3/4" x 14" LVL, 2' L	4	EA	
	1-3/4" x 14" LVL, 4' L	4	EA	
	1-3/4" x 14" LVL, 8' L	2	EA	
	1-3/4" x 14" LVL, 14' L	3	EA	
	1-3/4" x 14" LVL, 18' L	6	EA	
	2x8, 4' L	3	EA	
	2x8, 10' L	6	EA	
Floor Joists	2x8x8 Joists	133	EA	
	2x8x10 Joists	44	EA	
	2x8x12 Joists	34	EA	
	14" I-Joist, 4' L	1	EA	
	14" I-Joist, 6' L	1	EA	
	14" I-Joist, 8' L	5	EA	
	14" I-Joist, 10' L	1	EA	
	14" I-Joist, 12' L	12	EA	
	14" I-Joist, 14' L	435	EA	
	14" I-Joist, 16' L	2	EA	
	14" I-Joist, 18' L	23	EA	
Strongbacks	2x6x12'	122	EA	
Misc.	2x4x12 Nailer	37	EA	
	2x6x8 Studs	2	EA	
	2x8x12 Ledger	7	EA	
	2x8x14' Blocking	1	EA	
	1-3/4" x 14" DP LVL Ledger	3	EA	
	1-3/4" x 14" LSL Rim Board	77	EA	
5th Floor Materials				
Subfloor	3/4" T&G OSB Subfloor, 4x8 Sheets	438	EA	
Band Rip	5/8" OSB Sheathing, 4x8 Sheets	25	EA	14" I Joists, 16" Band Rip included
Beams	1-3/4" x 9-1/4" LVL, 12' L	3	EA	
	1-3/4" x 14" LVL, 2' L	4	EA	
	1-3/4" x 14" LVL, 4' L	4	EA	

Location	Material Description	Quantity	Unit	Notes
A	B	D	E	F
	1-3/4" x 14" LVL, 8' L	2	EA	
	1-3/4" x 14" LVL, 14' L	3	EA	
	1-3/4" x 14" LVL, 18' L	6	EA	
	2x8, 4' L	3	EA	
	2x8, 10' L	6	EA	
Floor Joists	2x8x8 Joists	133	EA	
	2x8x10 Joists	44	EA	
	2x8x12 Joists	34	EA	
	14" I-Joist, 4' L	1	EA	
	14" I-Joist, 6' L	1	EA	
	14" I-Joist, 8' L	5	EA	
	14" I-Joist, 10' L	1	EA	
	14" I-Joist, 12' L	12	EA	
	14" I-Joist, 14' L	435	EA	
	14" I-Joist, 16' L	2	EA	
	14" I-Joist, 18' L	23	EA	
Strongbacks	2x6x12'	122	EA	
Misc.	2x4x12 Nailers	37	EA	
	2x6x8 Studs	2	EA	
	2x8x12 Ledger	7	EA	
	2x8x14' Blocking	1	EA	
	1-3/4" x 14" DP LVL Ledger	3	EA	
	1-3/4" x 14" LSL Rim Board	77	EA	
<b>Roofing</b>				
Decking	3/4" Plywood Decking, 4x8 Sheets	470	EA	
Joists	2x8x8 Joists	98	EA	
	2x8x10 Joists	34	EA	
	2x8x18 Joists	6	EA	
Strongbacks	2x6x12'	122	EA	
Misc.	2x4x8 FRT Blocking	51	EA	



**HILTON  
PROJECT#  
22-081ND**

THIS DRAWING IS COPYRIGHTED  
AND IS THE SOLE PROPERTY OF  
MEYERS+ASSOCIATES ARCHITECTURE, LLC.  
IT IS PRODUCED FOR USE BY THE PROPERTY  
OWNER. REPRODUCTION OR OTHER USE OF  
THIS DRAWING OR THE INFORMATION CONTAINED  
HEREIN WITHOUT THE WRITTEN PERMISSION  
OF THE ARCHITECT IS EXPRESSLY PROHIBITED.  
ALL RIGHTS RESERVED.  
COPYRIGHT 2023

DESCRIPTION	DATE
30% PRELIM PLAN SUBMISSION	06.02.2023
PROGRESS PRINTING	07.21.2023
50% DESIGN DEVELOPMENT	09.01.2023
CONSTRUCTION DOCUMENTS	11.17.2023

**OVERALL BUILDING PLAN - FIRST FLOOR**  
**HOME2 SUITES (COLUMBUS)**

1475 Olentangy River Road  
Columbus, OH 43212



MEYERS+ASSOCIATES PROJECT NUMBER  
**2022-07**  
SHEET NUMBER

**A-101**

**A4 FIRST FLOOR BUILDING PLAN**  
1/8" = 1'-0"

**GENERAL NOTES:**

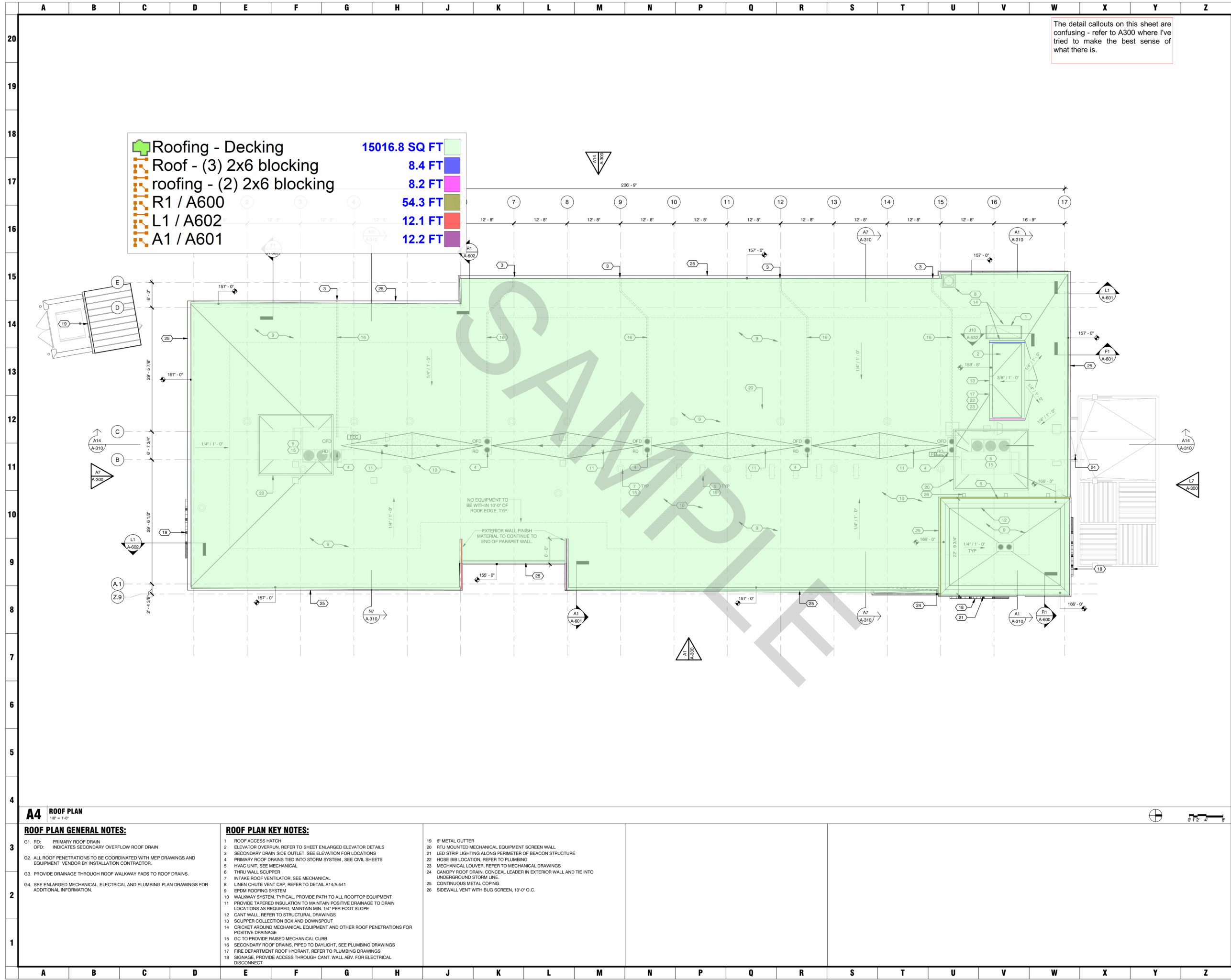
- G1. (X) INDICATES DOOR NUMBER, REFER SHEET A-900  
G2. (X) INDICATES WINDOW NUMBER, REFER SHEET A-910  
G3. (X) INDICATES WALL TYPE, REFER SHEET A-700  
G4. (FEC) INDICATES WALL MOUNTED FIRE EXTINGUISHER AND RECESSED FIRE EXTINGUISHER CABINET RESPECTIVELY  
G5. (A) INDICATES ACCESSIBLE ROOM  
G6. (A) INDICATES HEARING IMPAIRED ROOM. SEE SHEETS A-XXX AND A-XXX FOR ADDITIONAL INFORMATION  
G7. FIRST FLOOR ELEVATION 100'-0" = 732.93' ASL  
G8. DIMENSIONING IS BASED IN WOOD FRAME CONSTRUCTION AND WALL ASSEMBLIES SHOWN ON SHEET A-700. ALL DIMENSIONS ARE TO FACE OF STUD, U.N.O. HOLD ALL CLEAR INTERIOR ROOM DIMENSIONS.  
G9. SC: INDICATES OVERFLOW SCUPPER  
G10. SRD: INDICATES SECONDARY ROOF DRAIN  
G11. FD: INDICATES FLOOR DRAIN  
G12. SEE CODE SHEETS G-003 THRU G-613 FOR EXTENTS OF FIRE RATED PARTITIONS AND UL LISTINGS  
G13. SEE ENLARGED MECHANICAL, ELECTRICAL AND PLUMBING PLAN DRAWINGS FOR ADDITIONAL INFORMATION

- G14. COORDINATE ALL FINISH DIMENSIONS, PLUMB., MECH., ELECT., AND FIXTURE REQUIREMENTS WITH FINAL FIREWALL CONSTRUCTION  
G15. REFER TO ENLARGED PLANS, SHEETS A-400 SERIES FOR ADDITIONAL PUBLIC SPACE INFORMATION AND A-420'S & A-440'S SERIES FOR ADDITIONAL INDIVIDUAL UNIT INFORMATION  
G16. REFER TO GUESTROOM ELEVATIONS FOR MOUNTING CONFIGURATIONS OF OUTLETS, DEVICES AND MISC. FIXTURES  
G17. ACCESSIBLE UNITS MUST HAVE A CONNECTING DOOR TO AN ADJACENT UNIT  
G18. WATER CLOSET WASTE AND SUPPLY LINES ARE TO BE LOCATED IN WALL CHASE, NOT IN EXTERIOR WALLS, TYPICAL  
G19. TO THE MAXIMUM EXTENT POSSIBLE, FLOOR CLEAN-OUTS ARE TO BE LOCATED IN INCONSPICUOUS LOCATIONS, AND NOT IN GUESTROOMS. ALL FLOOR CLEAN-OUTS LOCATED IN CARPETED AREAS ARE TO BE FITTED WITH CARPET INSERTS. ALL CLEAN-OUTS ARE TO BE FLUSH TO FLOORS/WALLS  
G20. SEE SHEETS A-400, AND A-401 FOR ENLARGED PLANS OF FIRST FLOOR PUBLIC SPACES  
G21. SEE A-409 SHEETS FOR ENLARGED PLANS, ROPS AND ELEVATIONS OF GUESTROOM CORRIDORS  
G22. PROVIDE IN-WALL WOOD BLOCKING WHERE REQUIRED FOR WALL MOUNTED FURNITURE/CASEWORK

**FLOOR PLAN KEY NOTES:**

1. LINEN CHUTE, SEE SHEET A-541  
2. HOSE BIB LOCATION, SEE PLUMBING DRAWINGS.  
3. PROVIDE THICKENED SLAB WITH ISOLATION JOINTS AND TRENCH DRAIN FOR WASHING MACHINES, SEE DETAIL L11A-406  
4. RECESSED ENTRY WALK-OFF MAT - COORDINATE RECESS WITH MAT INSTALL  
5. ACCESSIBLE DRINKING FOUNTAIN  
6. EYE WASH STATION, REFER TO PLUMBING FOR MORE INFORMATION  
7. MOP SINK, PROVIDE MOP HOOKS ABOVE AND FRP SURROUND UP TO 48" AFF  
8. OWNER PROVIDED ICE MACHINE, COORDINATE WITH MEP DRAWINGS  
9. 2 TIER LOCKERS - SEE SPECIFICATIONS FOR FURTHER INFORMATION  
10. ALIGN FINISHES  
11. PROVIDE HOUSE PHONE AT LOCATION SHOWN, REFER TO ELECT.  
12. "SHIMMER" CONNECTION LOCATION, SEE CIVIL & FIRE PROTECTION DRAWINGS  
13. UTILITY SINK  
14. GC TO PROVIDE KNOX BOX, CONFIRM FINAL LOCATION WITH LOCAL AUTHORITIES AND ARCHITECT PRIOR TO INSTALL  
15. METAL STORAGE SHELVING  
16. EMPLOYEE TIMECLOCK, REFER TO ELECTRICAL DRAWINGS  
17. CART STORAGE - SEE SPECIFICATIONS FOR FURTHER INFORMATION  
18. PLUMBING EQUIPMENT, REFER TO PLUMBING DRAWINGS

19. GAS METER PTD. TO MATCH ADJACENT MATERIALS, REFER TO PLUMBING DRAWINGS  
20. WALL MOUNTED SHELVING, REFER TO INTERIOR ELEVATIONS  
21. PROVIDE WIRE SHELF & COAT ROD  
22. PROVIDE HOUSE PHONE AT UPPER LEVEL ELEVATOR LOBBIES (TYPICAL), COORDINATE WITH ELECTRICAL DRAWINGS  
23. PROVIDE PLYWOOD BLOCKING FOR INSTALLATION OF EQUIPMENT, REFER TO DETAIL U1A-700. COORDINATE WITH ELECTRICAL DRAWINGS FOR EQUIPMENT LOCATIONS  
24. OWNER PROVIDED SAFE DEPOSIT BOX LOCATION  
25. OWNER PROVIDED T.V. LOCATION, REFER TO ELECTRICAL DRAWINGS  
26. RECESSED FLOOR RECEPTACLE, REFER TO ELECTRICAL  
27. ALTERNATING TREAD STAIR TO ROOF ACCESS HATCH ABOVE, REFER TO ROOF PLAN  
28. ADD ONE ADDITIONAL LAYER OF DRYWALL ON EACH SIDE OF WALL TYPE FOR INCREASED STC RATINGS  
29. VTAC UNIT - SEE MECHANICAL DRAWINGS  
30. REFER TO SP-100 & SP-101 FOR TRASH ENCLOSURE AND STORAGE AREA PLANS/DETAILS  
31. KEYCARD READER LOCATION MOUNTED AT 48" AFF F.F., REFER TO ELECT.  
32. PROVIDE INTERCOM TIED TO FRONT DESK, REFER TO ELECT.  
33. KEYCARD READER LOCATION, REFER TO ELECT.



**meyers+**  
**associates**  
ARCHITECTURE · INTERIOR DESIGN

232 N. THIRD STREET, SUITE 300  
COLUMBUS, OH 43215  
614.221.9433  
MEYERSARCHITECTS.COM

**HILTON**  
**PROJECT#**  
**22-081ND**

THIS DRAWING IS COPYRIGHTED  
AND IS THE SOLE PROPERTY OF  
MEYERS+ASSOCIATES ARCHITECTURE, LLC.  
IT IS PRODUCED FOR USE BY THE PROPERTY  
OWNER REPRODUCTION OR OTHER USE OF  
THIS DRAWING OR THE INFORMATION CONTAINED  
HEREIN WITHOUT THE WRITTEN PERMISSION  
OF THE ARCHITECT IS EXPRESSLY PROHIBITED.  
ALL RIGHTS RESERVED  
COPYRIGHT 2023

DESCRIPTION	DATE
30% PRELIM PLAN SUBMISSION	06.02.2023
PROGRESS PRINTING	07.21.2023
50% DESIGN DEVELOPMENT	09.01.2023
CONSTRUCTION DOCUMENTS	11.17.2023

**OVERALL ROOF PLAN**

**HOME2 SUITES (COLUMBUS)**

1475 Olentangy River Road  
Columbus, OH 43212



MEYERS+ASSOCIATES PROJECT NUMBER  
**2022-07**

**A-106**